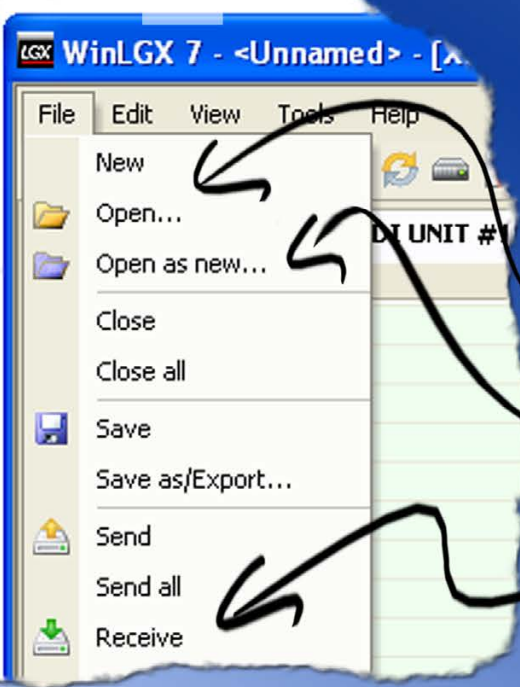


1.

NOTE: The WinLGX pictures in this document are from an UltraNEXUS WinLGX workstation. If you own a NEXUS, UltraNEXUS-SDI, MINI-T-NX, or TCD/V3, your WinLGX desktop images will vary slightly.

Open WinLGX and load an image file (.nmg) using one of the toolbar icons or menu options explained below. Image files hold the system, device, and library properties you will need before you can create a new schedule.



If you have not created an image file containing your configuration settings and resources, enter and save that information now. Refer to the *WinLGX Installation and Configuration Quick Guide* for instructions.

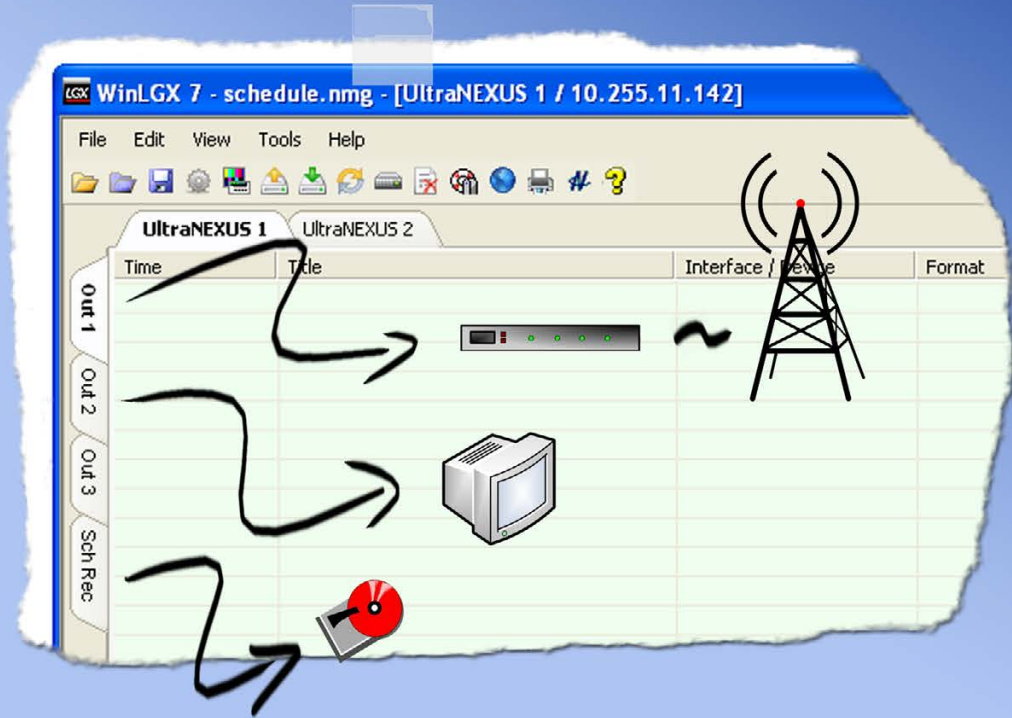
“Open”: navigate to and open a saved image file

“Open as new”: navigate to and open a saved image file, minus any previously entered schedule events

“Receive”: open the last image file sent to your LEIGHTRONIX server/controller

3.

Select a channel output tab. Most of these tabs correspond to the destinations attached to your switcher's outputs, such as modulators and preview monitors. If your LEIGHTRONIX server/controller has an internal encoder, you will also see a tab for scheduled MPEG recording.



2.

Select a day tab. WinLGX organizes schedule events on a day-by-day basis, allowing you to create week-long schedules.

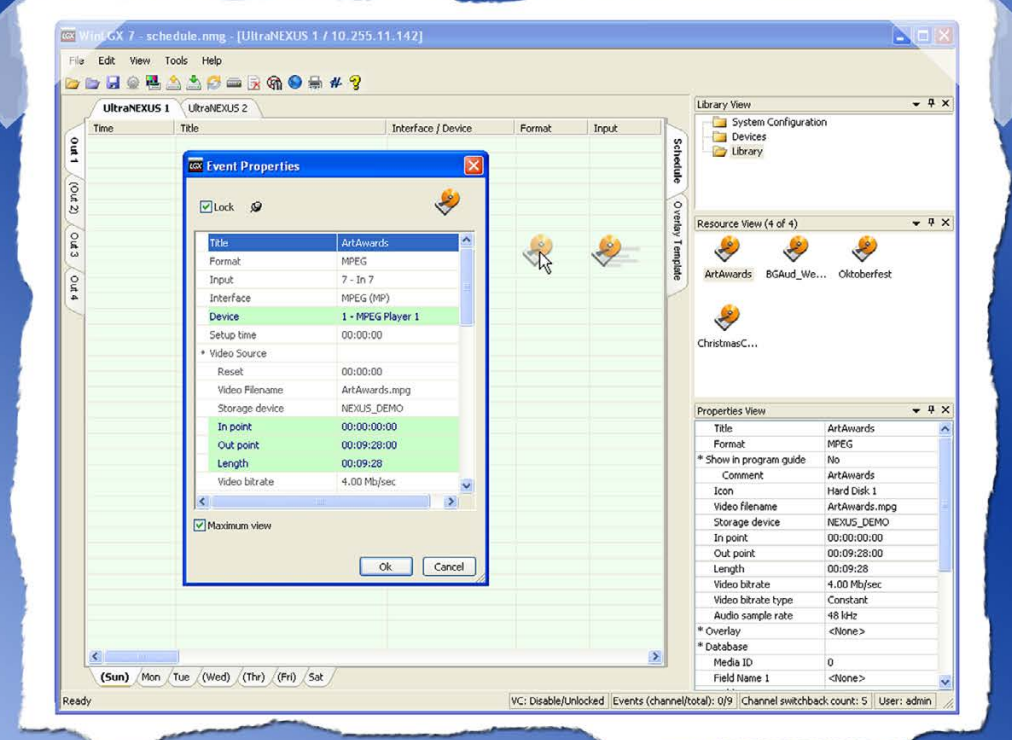


If you would prefer to create schedules based on date rather than day, use the WinLGX-LT tab. To display the WinLGX-LT tab, select the “Show the WinLGX-LT tab” box on the “Application” tab of the “Preferences” menu window.

Keep in mind that the WinLGX-LT tab does not perform device and conflict checking.

4.

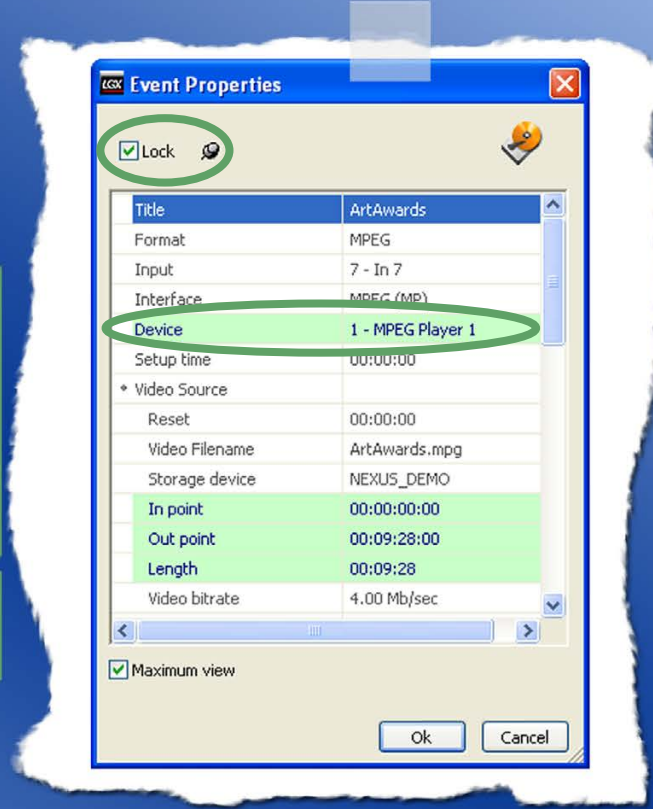
Open the “Devices” or “Library” folder holding the resource you'd like to schedule. Drag the resource onto the schedule window and then release the button to display the resource's “Event Properties” box.



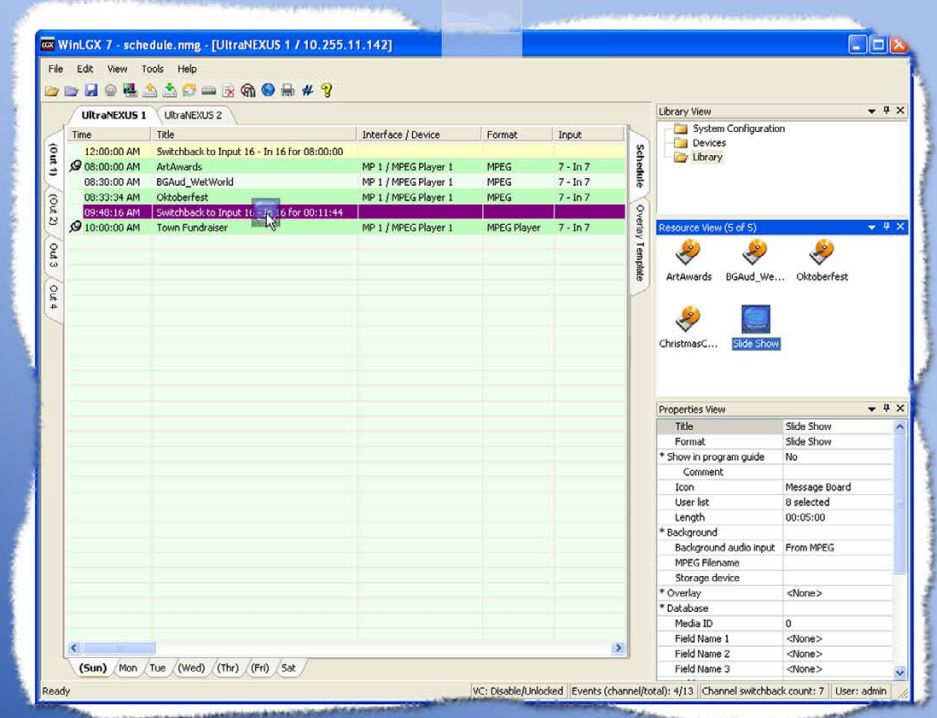
5. All of the highlighted fields in the event properties box contain editable information. At minimum, ensure you select the right device for the program event and a start time.

“Lock” box: if you want your program event to occur at a fixed time, select this box and then enter a time into the start time field. If left unchecked, the start time of the program will begin right after any event scheduled just before it or, if there are not preceding events, at midnight of the selected day/date.

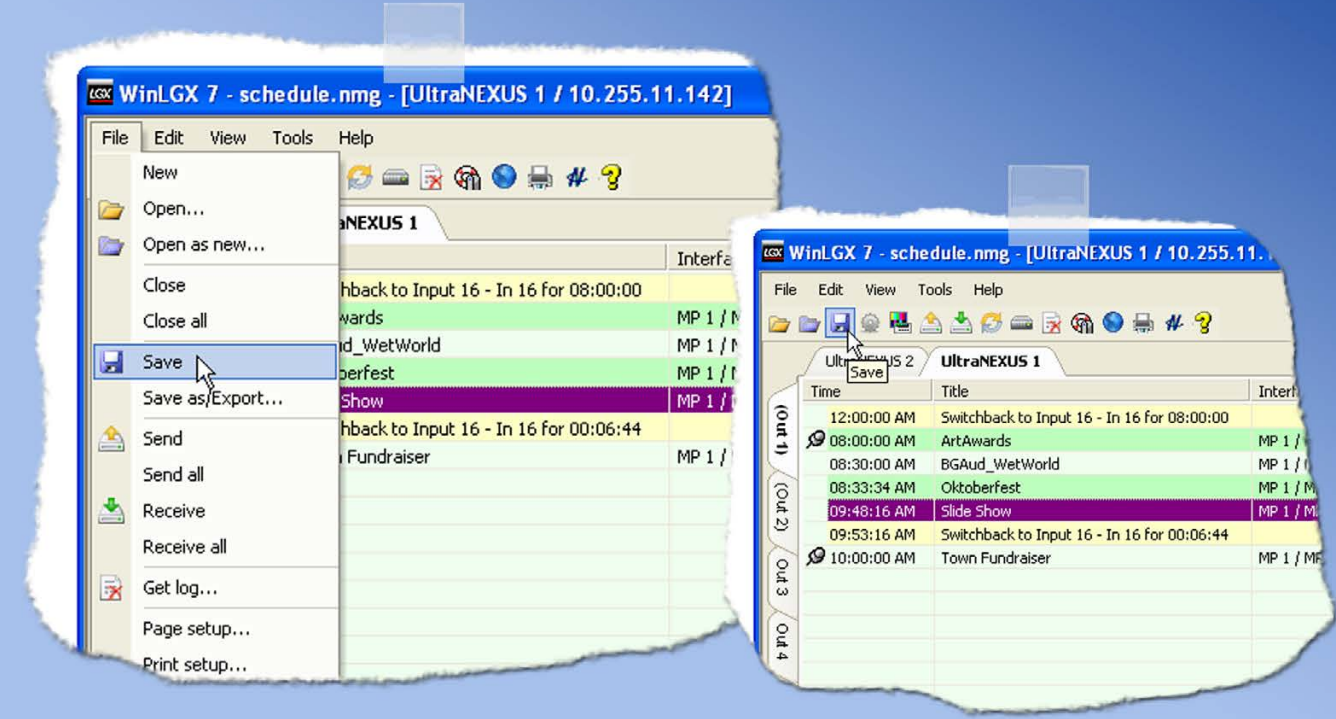
“Device” field: ensure the correct device has been selected for the program



6. Once you've added your programs to the schedule, look it over and make any necessary adjustments. Edit any of your schedule events by double clicking the program event and then adjusting the program information. You may also fill the time between programs with any of your resources. Slides and slide shows are particularly useful for this task. Just drag your resources into the program intervals and complete the event properties box information.



7. Save your image file with the file menu option or toolbar icon.



8. Send your image file to the LEIGHTRONIX server/controller to start running your schedule.

