

PRODUCT QUICK GUIDE

Hardware Setup | Network Configuration | WinLGX Software Installation | Web Control

Ultra NEXUS-HD™



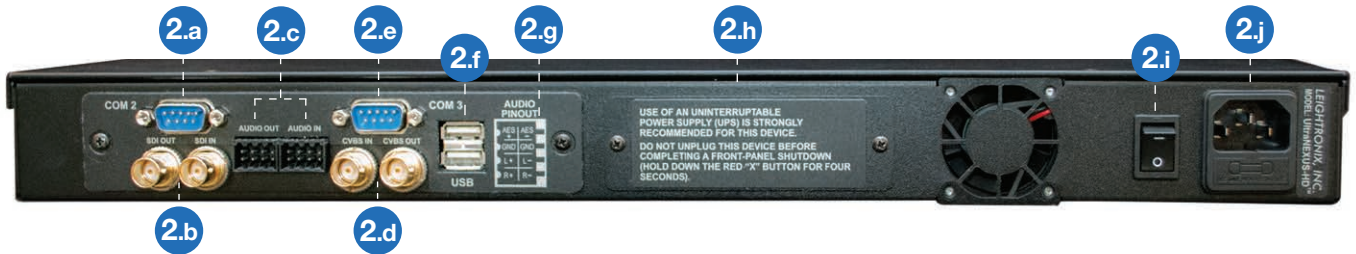
H.264 HD/SD Digital Video Server
Television Automation

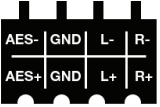
1

Hardware Setup



- 1.a Display** — View system status, diagnostic information, and current configurations.
- 1.b Keypad** — The UltraNEXUS-HD™ has a six-button keypad for navigating system status displays and configuration menus.
- 1.c 2 Ethernet Ports** — Port 1: Using the included Ethernet cable, connect the UltraNEXUS-HD directly to a 100/1000 switch on the network. Port 2: To be used for future expansion.
- 1.d COM 1 Port** — RS-232 serial port with 9-pin male connector for use with LEIGHTRONIX supported audio/video routers with a maximum supported matrix size of 250 inputs by 250 outputs.
- 1.e Secured Digital (SD) Card** — The UltraNEXUS-HD SD card contains operating system and other system files. **WARNING: Do not remove the SD card during operation. Serious damage may occur.**



- 2.a COM 2 Port** — RS-232 serial port with 9-pin male connector for serial communications.
- 2.b Serial Digital Interface (SDI) Input and Output Connectors** — Connect the SDI source and destination signals to the **SDI IN** and **SDI OUT** connectors respectively. **NOTE: Use of HD-SDI rated coaxial cable is highly recommended.**
- 2.c Audio Input and Output Terminal Blocks** — If used, connect AES or analog audio source and destination signals to the **AUDIO IN** and **AUDIO OUT** terminal blocks. Detailed information regarding wire preparation can be found in the full UltraNEXUS-HD manual.
- 2.d Composite Video Input and Output Connectors** — If used, connect composite video source and destination signals to the **CVBS IN** and **CVBS OUT** connectors respectively. The composite video outputs a down-scaled version of the high definition signal.
- 2.e COM 3 Port** — RS-232 serial port with 9-pin male connector for serial communications.
- 2.f USB 2.0 Ports** — Connect up to two (2) LEIGHTRONIX external hard drive units for up to four terabytes (4TB) of increased digital media storage capacity.
- 2.g**  **Figure 3, UltraNEXUS-HD Audio Terminal Block Wire Location** (see full manual for details)
- 2.h Internal Solid State Drive (SSD)** — The UltraNEXUS-HD comes equipped with a one terabyte (1TB) SSD for digital media storage. **NOTE: The internal SSD is non-serviceable.**
- 2.i** Press 1 on the power switch to power on the UltraNEXUS-HD.
- 2.j** Connect the included power cable into the power cord receptacle of the UltraNEXUS-HD, and then plug the other end into a MAINS AC power source. **NOTE: Use of an uninterruptible power supply (UPS) with the UltraNEXUS-HD is highly recommended.**

Components Key



BNC Cables



USB Cable



Serial Cable



Ethernet Cable (included)



Power Cord (included)

2 Network Configuration

Entering the Front Panel Password

From the front panel of your UltraNEXUS-HD server, press the right arrow key [➡] from any status screen to display the password entry screen. Press the right arrow key five (5) times to enter the default front panel password and access configuration menus. **NOTE:** To replace the unit's password, refer to the **Changing Front Panel Password** section in the full UltraNEXUS-HD manual.

Editing TCP/IP Network Addresses

Obtain network addresses from your technical support personnel or network administrator.

IP Address

1. From the **CONFIG MENU** screen, press the up/down arrow keys [⬆⬇] and navigate to **Set IP Address**.
2. Press the right arrow key [➡] to select **Set IP Address**.
3. Press the right/left arrow keys [⬅➡] to position the cursor under the editable fields and press the up/down arrow keys [⬆⬇] to edit values. Press the right arrow key [➡] at the end of all editable fields to enter the next screen.
4. Either press the right arrow key [➡] again to save changes or the left arrow key [⬅] to abort changes.

Subnet Mask Address

1. From the **CONFIG MENU** screen, press the up/down arrow keys [⬆⬇] to navigate to **Set Subnet Mask**.
2. Press the right arrow key [➡] to select **Set Subnet Mask**.

3. Press the right/left arrow keys [⬅➡] to position the cursor under editable fields and press the up/down arrow keys [⬆⬇] to edit values. Press the right arrow key [➡] at the end of all editable fields to enter the next screen.
4. Either press the right arrow key [➡] again to save changes or the left arrow key [⬅] to abort them.

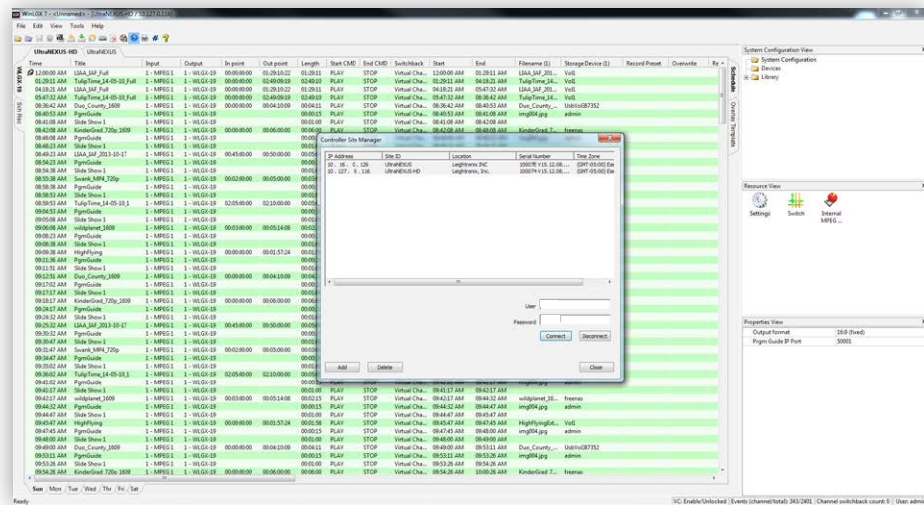
Gateway Address

5. From the **CONFIG MENU** screen, press the up/down arrow keys [⬆⬇] and navigate to **Set Gateway 1**.
6. Press the right arrow key [➡] to select **Set Gateway 1**.
7. Press the right/left arrow keys [⬅➡] to position the cursor under editable fields and press the up/down arrow keys [⬆⬇] to edit values. Press the right arrow key [➡] at the end of all editable fields to enter the next screen.
8. Either press the right arrow key [➡] again to save changes or the left arrow key [⬅] to abort them.

NOTE: The UltraNEXUS-HD must be rebooted by holding down the center check mark button [⬆⬇] for five (5) seconds to apply any network address changes.

3 WinLGX Software Installation

WinLGX System Management Interface



WinLGX Minimum System Requirements

- Microsoft Windows 7 or newer
- 1.6 GHz or faster processor
- 1 GB of RAM (2 GB recommended)

NOTE: The following steps were written for Windows 7 and 8, and may vary for later versions.

This section provides instructions for installing the UltraNEXUS-HD system management software, WinLGX™, along with some basic configuration steps. For more detailed configuration information, refer to the full UltraNEXUS-HD manual. WinLGX™ configurations must be completed before a schedule can be created.

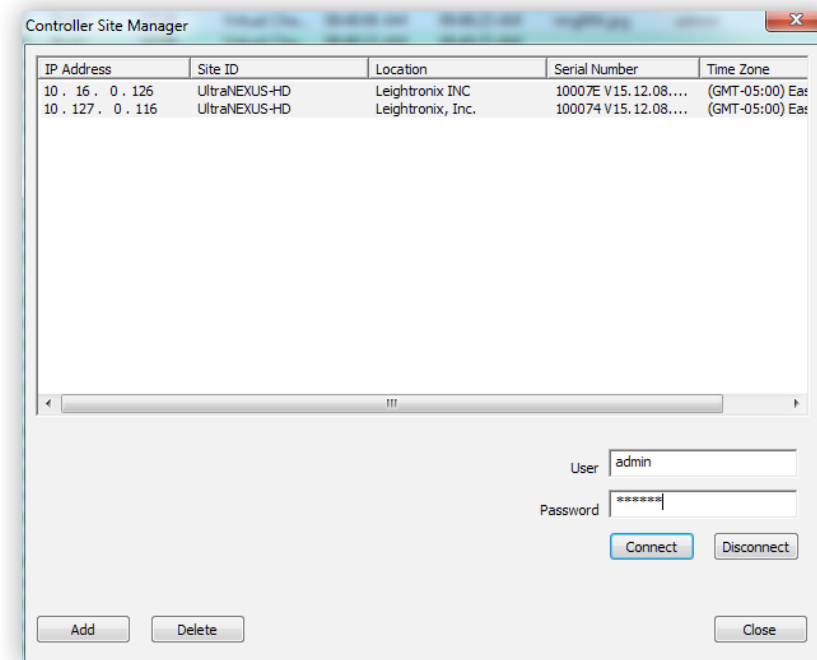
1. Visit www.supportcenter.leightronix.com and login with an existing account's username and password, or click **Register** and complete the registration process to create a new account.
2. Once logged in, click **UltraNEXUS-HD** on the right side of the page.
3. Click the **WinLGX Software 7.0.x.x** link in the **Current Versions** section to download the installer.
4. Navigate to where the WinLGX installer (**WinLGX_v7.0.x.x_Installer.exe**) was saved on your computer.
5. Right click the WinLGX installer and choose the **run as administrator** option to start the installation. Follow the prompts to complete setup.
6. As WinLGX installs, two additional windows will be displayed. **Refer to Figure 6.a on the right** for a description of each window and installation guidelines.
7. Click **Finish** to close the WinLGX setup wizard and return to Windows.

- **Microsoft Visual C++ library window:** This window is used to install the Microsoft Visual C++ runtime components needed to run WinLGX on your computer or network. Click the **Repair** button if you are using WinLGX version 6 or older (i.e., WinLGX versions 6.0.1.48). If you are already running WinLGX 7 or greater, click the **Cancel** button on the bottom of the popup window.

NOTE: Choosing **Cancel** does not stop the WinLGX installation process, which will continue as a background operation.

- **VLC media player setup wizard:** VLC media player is necessary in order to use the WinLGX software preview and confidence monitor features (for more information on these features, refer to the full UltraNEXUS-HD manual). If you do not intend to use the WinLGX software monitor features, you may opt out of the VLC installation process by clicking the **Cancel** button. If you choose to install VLC media player, but do not want the player to be automatically chosen for media playback, deselect **Audio Files** and **Other** under the **File Type Associations** settings during installation.

WinLGX Site Manager



How To Schedule Your First Broadcast

Head to the **Scheduling Events** section in the full UltraNEXUS-HD manual to set up your first broadcast!

Contact tech support

for additional assistance:
(800) 243-5589
support@leightronix.com

Use the WinLGX **Controller Site Manager** window to store your UltraNEXUS-HD server's network IP address information. WinLGX uses each server's IP address to locate the server and send/receive system information. Manage the IP address listing of your UltraNEXUS-HD as follows:

1. Click **Add** on the **Controller Site Manager** window to open the **Add New Controller** window.
2. Enter the IP address displayed on the UltraNEXUS-HD server's front panel. This address can be viewed from the front panel display by pressing the up/down arrow keys [**▲▼**] until the IP address is shown.
3. Enter username in the **User** field.
4. Enter password in the **Password** field.
5. Click **Find**. If the correct IP address has been added, your server's site ID, location, serial number, and time zone display in the **Add New** window.
6. Click **OK** to enter your UltraNEXUS-HD server in the site manager database.
7. If applicable, repeat steps 1-6 for each additional UltraNEXUS-HD server in your system, otherwise click **Connect** to login to the UltraNEXUS-HD server.

NOTE: The username and password are case-sensitive and may only contain letters and numbers.

FACTORY-DEFAULT USERNAME AND PASSWORD FOR THE ULTRANEXUS-HD

User field: admin

Password field: The last six digits of the UltraNEXUS-HD server's serial number. **NOTE:** Enter any letters in uppercase (example 102A2A).


Figure 6.a

4 Web Control

Access your UltraNEXUS-HD from your network with WebNEXUS™, a built-in password-protected web interface. WebNEXUS provides the ability to manage slides, create and display overlays, create looping playlists for Virtual Channel between, as, or in place of scheduled programming, transfer video files to specified destinations, record video files, and view the UltraNEXUS-HD system's status, program guide, and log files.

Accessing WebNEXUS

Open the UltraNEXUS-HD web interface through one of the two following steps:

1. If you already have WinLGX open and are logged into the desired UltraNEXUS-HD's IP address, select **Web interface** from the **Tools** menu or click on the [] toolbar icon to open the web interface in your default web browser.
2. Enter your UltraNEXUS-HD's IP address into the address bar of a web browser.

A login prompt will appear. Enter the username and password initially set up in WinLGX to access WebNEXUS. Refer to the **WinLGX Software Installation** section of this quick guide for more information.

More Information

Head to the **Web Control** section of the full UltraNEXUS-HD manual for more information on WebNEXUS and its functions.

Support & Product Registration

Support

At LEIGHTRONIX, every customer of our standard product line gets free support for the life of their product, at no extra charge. There are no service contracts, no annual renewals, no allowances, no deductibles, and no exclusions.

In addition to a 5 year hardware warranty, benefits include access to:

- Priority toll-free telephone support
- Email support
- Online support, desktop to desktop via Webex®
- Software updates
- Firmware updates
- Assistance with updates

Phone: (800) 243-5589

Email: support@leightronix.com

UltraNEXUS-HD, WebNEXUS, and TOTAL SHARE are trademarks of LEIGHTRONIX, INC.

Product Registration

Be sure to register your new UltraNEXUS-HD digital video encoder at **supportcenter.leightronix.com** to receive all of the additional online product support benefits.

Along with email notifications on product updates and introductions, benefits include access to:

- Our 24/7 online Support Center
- Software and firmware updates
- Product training videos
- Product diagrams and images
- Tutorials and white papers

LEIGHTRONIX, INC.
1125 N Cedar Rd | Mason, MI 48854
Phone: (800) 243-5589 or (517) 694-8000 | Fax: (517) 694-1600
www.leightronix.com
12/23/15

© 2015 LEIGHTRONIX, INC. All rights reserved.
The information in this manual is subject to change without notice.