

PRODUCT QUICK GUIDE

Hardware Setup | Network Configuration | WinLGX Software Installation | Web Control

Ultra NEXXUS HD Blade™



H.264 HD/SD Digital Video Server
Television Automation

1 Hardware Setup

- 1.a Display** — View system status, diagnostic information, and current configurations.
- 1.b Multidirectional Switch** — The UltraNEXUS-HD Blade™ uses a 5-way switch for navigating system status displays and configuration menus. The multidirectional switch can be pressed up, down, left, right, and inward (refer to figure 1.b).
- 1.c 2 Ethernet Ports** — Port 1: Using the included Ethernet cable, connect the UltraNEXUS-HD Blade directly to a 100/1000 switch on the network. Port 2: To be used for future expansion.
- 1.d COM 1 Port** — RS-232 serial port with 9-pin male connector for use with LEIGHTRONIX supported audio/video routers with a maximum supported matrix size of 250 inputs by 250 outputs.
- 1.e Secured Digital (SD) Card** — The UltraNEXUS-HD Blade SD card contains operating system and other system files.
WARNING: Do not remove the SD card during operation.
 Serious damage may occur.

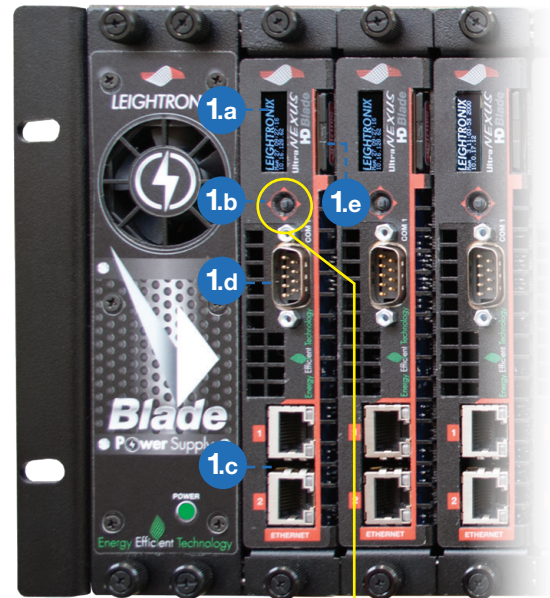
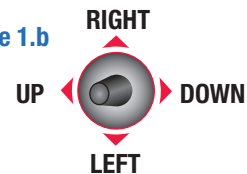


Figure 1.b



Switch is oriented relative to an UltraNEXUS-HD Blade's display.

- 2.a Serial Digital Interface (SDI) Input and Output Connectors** — Connect the SDI source and destination signals to the **SDI IN** and **SDI OUT** connectors respectively. **NOTE:** Use of HD-SDI rated coaxial cable is highly recommended.
- 2.b Audio Input and Output Terminal Blocks** — If used, connect AES or analog audio source and destination signals to the **AUDIO IN** and **AUDIO OUT** terminal blocks (refer to figure 2.b). Detailed information regarding wire preparation can be found in the full product manual.
- 2.c Composite Video Output Connector** — If used, connect composite video destination signal to the **CVBS OUT** connector. The BNC composite video outputs a scaled-down version of the high-definition signal.
- 2.d USB 2.0 Ports** — Connect up to two (2) LEIGHTRONIX external hard drive units for up to four terabytes (4TB) of increased digital media storage capacity.
- 2.e** Connect the included power cables into the power cord receptacles of the UltraNEXUS-HD Blade's two redundant power supplies, and then plug the other ends into a MAINS AC power source.
NOTE: Use of an uninterruptible power supply (UPS) with the UltraNEXUS-HD Blade is highly recommended.

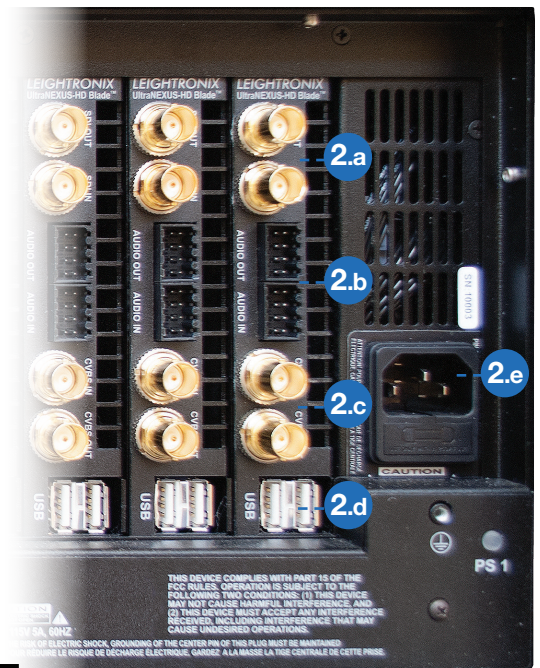
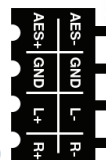


Figure 2.b



UltraNEXUS-HD Blade Audio Terminal Block Wire Location
(see full manual for details)

Components Key



BNC Cables



USB Cable



Serial Cable



Ethernet Cable (included)



Power Cords (included)

2 Network Configuration

Entering the Front Panel Password

From the front panel of your UltraNEXUS-HD Blade server, press the multidirectional switch right from any status screen to display the password entry screen. Press the switch right five (5) times to enter the default front panel password and access configuration menus. **NOTE:** To replace the unit's password, refer to the Changing Front Panel Password section in the full manual.

Editing TCP/IP Network Addresses

Obtain network addresses from your technical support personnel or network administrator.

IP Address

1. From the CONFIG MENU screen, press the multidirectional switch up or down and navigate to Set IP Address.
2. Press the multidirectional switch right to select Set IP Address.
3. Move the multidirectional switch left or right to position the cursor under the editable fields and press up or down to edit values. Press the switch right at the end of all editable fields to enter the next screen.
4. Either press the multidirectional switch right again to save changes or press it left to abort changes.

4. Either press the multidirectional switch right again to save changes or left to abort them.

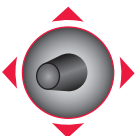
Gateway Address

5. From the CONFIG MENU screen, press the multidirectional switch up or down and navigate to Set Gateway 1.
6. Press the multidirectional switch right to select Set Gateway 1.
7. Press the multidirectional switch left or right to position the cursor under editable fields and press it up or down to edit values. Press the switch right at the end of all editable fields to enter the next screen.
8. Either press the multidirectional right again to save changes or left to abort them.

NOTE: The UltraNEXUS-HD Blade must be rebooted by pushing in the multidirectional switch for five (5) seconds to apply any network address changes.

Subnet Mask Address

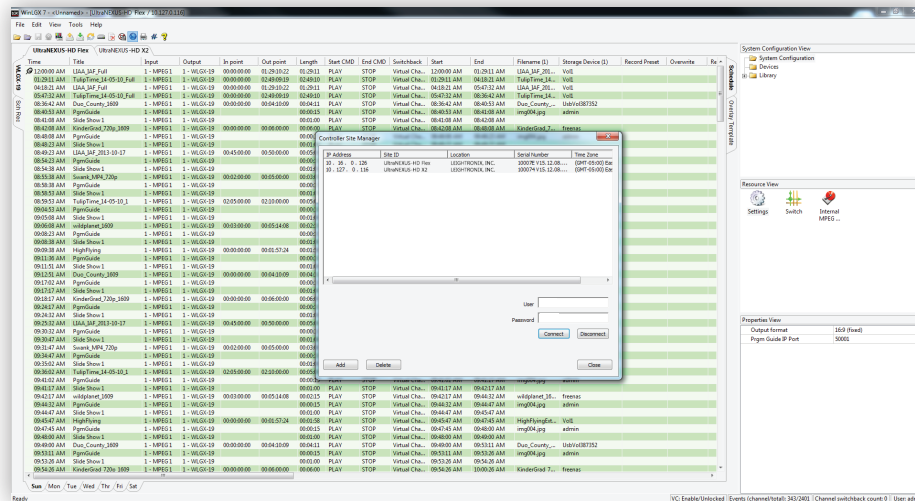
1. From the CONFIG MENU screen, press the multidirectional switch up or down to navigate to Set Subnet Mask.
2. Press the multidirectional switch right to select Set Subnet Mask.
3. Press the multidirectional switch left or right to position the cursor under editable fields and press it up or down to edit values. Press the switch right at the end of all editable fields to enter the next screen.



(Multidirectional switch on the front of the UltraNEXUS-HD Blade)

3 WinLGX Software Installation

WinLGX System Management Interface



WinLGX Minimum System Requirements

- Microsoft Windows 7 or newer
- 1.6 GHz or faster processor
- 2 GB of RAM

NOTE: The following steps were written for Windows 7 and 8, and may vary for later versions.

This section provides instructions for installing the UltraNEXUS-HD Blade system management software, WinLGX™, along with some basic configuration steps. For more detailed configuration information, refer to the full manual. WinLGX configurations (particularly for switch type and size) must be completed before a schedule can be created.

1. Visit www.leightronix.com/support.html and find your UltraNEXUS-HD series product.
2. Click the appropriate link for your product under the Current Client Software Version column to download the WinLGX installer.
3. Navigate to where the WinLGX installer (WinLGX_v7.0.x.x_Installer.exe) is saved on your computer.
4. Right click the WinLGX installer and choose the **run as administrator** option to start the installation. Follow the prompts to complete setup.
5. As WinLGX installs, two additional windows will be displayed. **NOTE:** Refer to Figure 6.a on the right for a description of each window and installation guidelines.
6. Click **Finish** to close the WinLGX setup wizard and return to Windows.

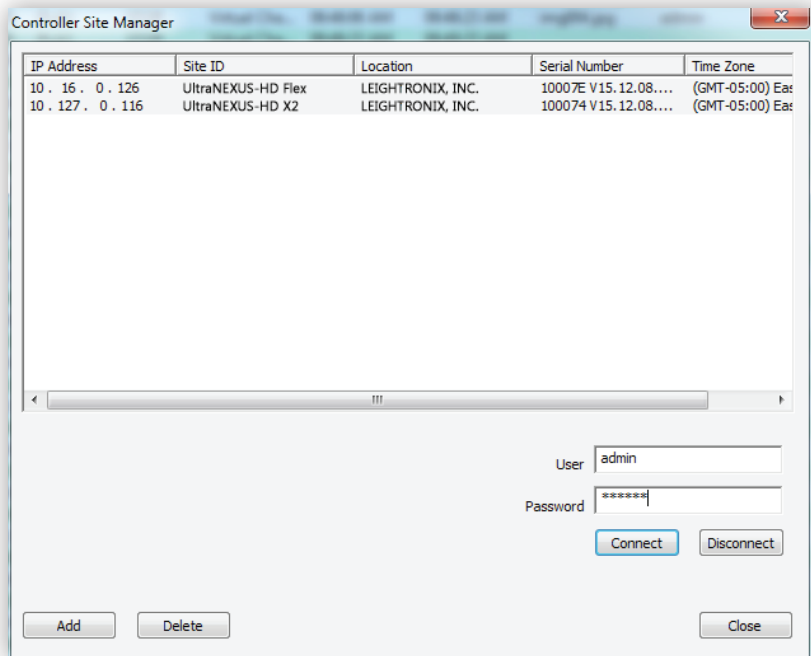
- **Microsoft Visual C++ library window:** This window is used to install the Microsoft Visual C++ runtime components needed to run WinLGX on your computer or network. Click **Repair** if you are using WinLGX version 6 or older (i.e., WinLGX versions 6.0.1.48). If you are already running WinLGX 7 or greater, click **Cancel** on the bottom of the popup window.

NOTE: Choosing **Cancel** does not stop the WinLGX installation process, which will continue as a background operation.

- **VLC media player setup wizard:** VLC media player is necessary in order to use the WinLGX software preview and confidence monitor features (for more information on these features, refer to the full manual). If you do not intend to use the WinLGX software monitor features, you may opt out of the VLC installation process by clicking **Cancel**. If you choose to install VLC media player, but do not want the player to be automatically chosen for media playback, deselect **Audio Files** and **Other** under the File Type Associations settings during installation.

Figure 6.a

WinLGX Site Manager



How To Schedule Your First Broadcast

Head to the Scheduling Events section in the full manual to set up your first broadcast!

Contact tech support

for additional assistance:
(800) 243-5589
support@leightronix.com

Use the WinLGX Controller Site Manager window to store your UltraNEXUS-HD Blade server's network IP address information. WinLGX uses each server's IP address to locate the server and send/receive system information. Manage the IP address listing of your UltraNEXUS-HD Blade as follows:

1. Click **Add** on the Controller Site Manager window to open the Add New Controller window.
2. Enter the IP address displayed on the server's front panel. This address can be viewed from the front panel display by pressing the multidirectional switch up/down until the IP address is shown.
3. Enter username in the User field.
4. Enter password in the Password field.
5. Click **Find**. If the correct IP address has been added, your server's site ID, location, serial number, and time zone display in the Add New window.
6. Click **OK** to enter your UltraNEXUS-HD Blade server in the site manager database.
7. If applicable, repeat steps 1-6 for each additional UltraNEXUS-HD series server in your system, otherwise click **Connect** to log in to the UltraNEXUS-HD Blade server.

NOTE: The username and password are case-sensitive and may only contain letters and numbers.

FACTORY-DEFAULT USERNAME AND PASSWORD FOR THE ULTRANEXUS-HD BLADE

User field: admin


Password field: The last six digits of the UltraNEXUS-HD Blade server's serial number. **NOTE:** Enter any letters in uppercase (example 102A2A).

4 Web Control

Access your UltraNEXUS-HD Blade from your network with WebNEXUS™, a built-in password-protected web interface. WebNEXUS provides the ability to manage slides, create and display overlays, create looping playlists for Virtual Channel between, as, or in place of scheduled programming, transfer video files to specified destinations, and view the UltraNEXUS-HD Blade system's status, program guide, and log files.

Accessing WebNEXUS

Open the UltraNEXUS-HD Blade web interface through one of the two following steps:

1. If you already have WinLGX open and are logged into the desired UltraNEXUS-HD Blade's IP address, select **Web interface** from the Tools menu or click on the [] toolbar icon to open the web interface in your default web browser.
2. Enter your UltraNEXUS-HD Blade's IP address into the address bar of a web browser.

A login prompt will appear. Enter the username and password initially set up in WinLGX to access WebNEXUS. Refer to the WinLGX Software Installation section of this quick guide for more information.

More Information

Head to the Web Control section of the full product manual for more information on WebNEXUS and its functions.

Support

At LEIGHTRONIX, every customer of our standard product line receives technical support at no extra charge. There are no service contracts, no annual renewals, no allowances, no deductibles, and no exclusions.

In addition to a 5 year hardware warranty, benefits include access to:

- Priority toll-free telephone support
- Email support
- Online support, desktop to desktop
- Software updates
- Firmware updates
- Assistance with updates

Looking for firmware/software or additional documentation? Go to www.leightronix.com/support.html to download important updates and full product manuals.

Phone: (800) 243-5589

Email: support@leightronix.com

UltraNEXUS-HD, UltraNEXUS-HD Blade, WinLGX, and WebNEXUS are trademarks of LEIGHTRONIX, INC.

LEIGHTRONIX, INC.
1125 N Cedar Rd | Mason, MI 48854
Phone: (800) 243-5589 or (517) 694-8000 | Fax: (517) 694-1600
www.leightronix.com
01/22/21

© 2021 LEIGHTRONIX, INC. All rights reserved.
The information in this manual is subject to change without notice.