

# PRODUCT QUICK GUIDE

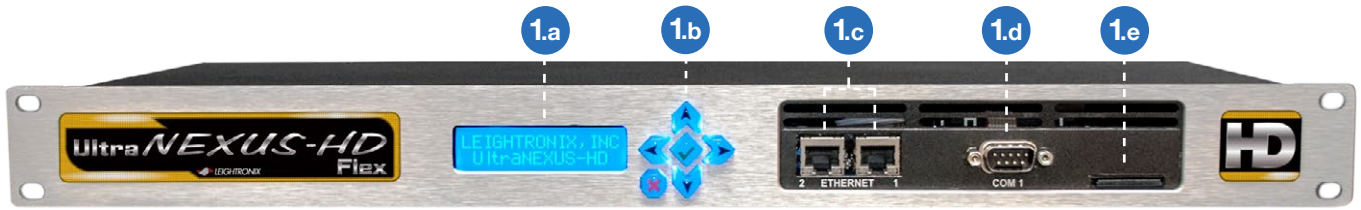
Hardware Setup | Network Configuration | WinLGX Software Installation | Web Control

## Ultra *NEXUS-HD*<sup>TM</sup> Flex



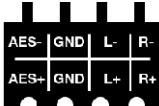
**H.264 HD/SD** Digital Video Server  
Television Automation

# 1 Hardware Setup



- 1.a Display** — View system status, diagnostic information, and current configurations.
- 1.b Keypad** — The UltraNEXUS-HD™ Flex has a six-button keypad for navigating system status displays and configuration menus.
- 1.c 2 Ethernet Ports** — Port 1: Using the included Ethernet cable, connect the UltraNEXUS-HD Flex directly to a 100/1000 switch on your network. Port 2: To be used for specialized network situations.
- 1.d COM 1 Port** — RS-232 serial port with 9-pin male connector for use with LEIGHTRONIX supported audio/video routers with a maximum supported matrix size of 250 inputs by 250 outputs.
- 1.e Secured Digital (SD) Card** — The UltraNEXUS-HD Flex SD card contains operating system and other system files.  
**WARNING:** Do not remove the SD card during operation. Serious damage may occur.



- 2.a COM 2 Port** — RS-232 serial port with 9-pin male connector for diagnostic serial communications.
- 2.b Serial Digital Interface (SDI) Input and Output Connectors** — Connect the SDI source and destination signals to the **SDI IN** and **SDI OUT** connectors respectively. **NOTE:** Use of HD-SDI rated coaxial cable is highly recommended.
- 2.c Audio Input and Output Terminal Blocks** — If used, connect AES or analog audio source and destination signals to the **AUDIO IN** and **AUDIO OUT** terminal blocks. Detailed information regarding wire preparation can be found in the full manual.
- 2.d COM 3 Port** — RS-232 serial port with 9-pin male connector for future serial communications.
- 2.e USB 2.0 Ports** — Connect up to two (2) LEIGHTRONIX external hard drive units for up to four terabytes (4TB) of increased digital media storage capacity.
- 2.f**  Figure 3, UltraNEXUS-HD Flex Audio Terminal Block Wire Location (see full manual for details)
- 2.g Internal Hard Drive** — The UltraNEXUS-HD Flex comes equipped with a one terabyte (1TB) hard drive for digital media storage. **NOTE:** The internal hard drive is non-serviceable.
- 2.h** Press **1** on the power switch to power on the UltraNEXUS-HD Flex.
- 2.i** Connect the included power cable into the power cord receptacle of the UltraNEXUS-HD Flex, and then plug the other end into a MAINS AC power source. **NOTE:** Use of an uninterruptible power supply (UPS) with the UltraNEXUS-HD Flex is highly recommended.

## Components Key



# 2

# Network Configuration

## Entering the Front Panel Password

From the front panel of your UltraNEXUS-HD Flex server, press right [➤] from any status screen to display the password entry screen. Press right [➤] five (5) times to enter the default front panel password and access configuration menus.

**NOTE:** To replace the unit's password, refer to the Changing Front Panel Password section in the full manual.

## Editing TCP/IP Network Addresses

Obtain network addresses from your technical support personnel or network administrator.

### IP Address

1. From the CONFIG MENU screen, press up/down [▲▼] and navigate to Set IP Address.
2. Press right [➤] to select Set IP Address.
3. Press right/left [◀➤] to position the cursor under editable fields and press up/down [▲▼] to edit values. Press right [➤] at the end of all editable fields to enter the next screen.
4. Either press right [➤] again to save changes or left [◀] to abort them.

4. Either press right [➤] again to save changes or left [◀] to abort them.

### Gateway Address

5. From the CONFIG MENU screen, press up/down [▲▼] and navigate to Set Gateway 1.
6. Press right [➤] to select Set Gateway 1.
7. Press right/left [◀➤] to position the cursor under editable fields and press up/down [▲▼] to edit values. Press right [➤] at the end of all editable fields to enter the next screen.
8. Either press right [➤] again to save changes or left [◀] to abort them.

**NOTE:** The UltraNEXUS-HD Flex must be rebooted by holding down the center check mark [✓] for seven (7) seconds to apply any network address changes.

### Subnet Mask Address

1. From the CONFIG MENU screen, press up/down [▲▼] to navigate to Set Subnet Mask.
2. Press right [➤] to select Set Subnet Mask.
3. Press right/left [◀➤] to position the cursor under editable fields and press up/down [▲▼] to edit values. Press right [➤] at the end of all editable fields to enter the next screen.

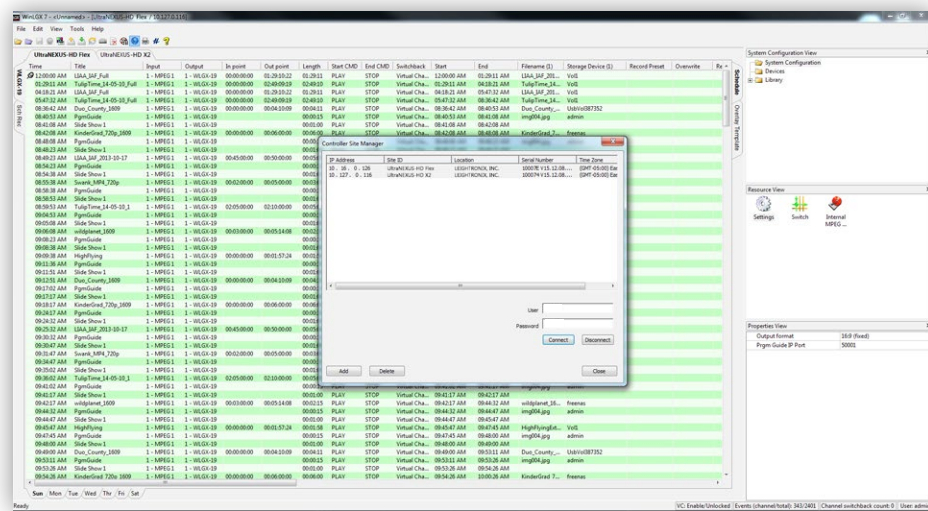


## How to Properly Shutdown Your UltraNEXUS-HD Flex

Press and hold the red X [✖] on the front panel for approximately seven (7) seconds until the front panel display shows **EXECUTING SYSTEM SHUTDOWN**. After approximately three (3) seconds, **SYSTEM HALTING REMOVE POWER** will appear on the front panel display. At this point, all services will be stopped and the operating system will shut down. Power off the system by pressing 0 on the power switch.

# 3 WinLGX Software Installation

## WinLGX System Management Interface



### WinLGX Minimum System Requirements

- Microsoft Windows 7 or newer
- 1.6 GHz or faster processor
- 2 GB of RAM

**NOTE:** The following steps were written for Windows 7 and 8, and may vary for later versions

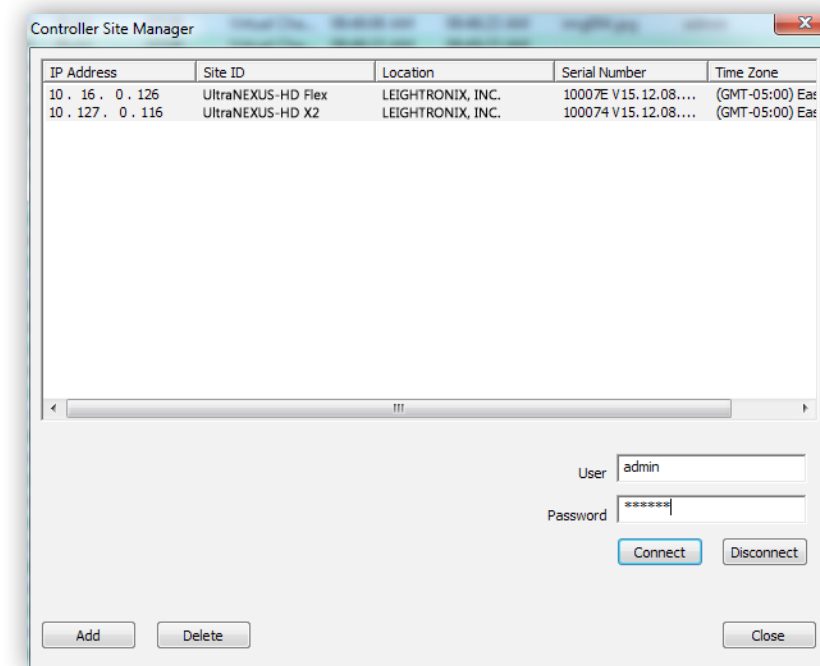
This section provides instructions for installing the UltraNEXUS-HD Flex system management software, WinLGX™, along with some basic configuration steps. For more detailed configuration information, refer to the full manual. WinLGX configurations (particularly for switch type and size) must be completed before a schedule can be created.

1. Visit [www.leightronix.com/support.html](http://www.leightronix.com/support.html) and find your UltraNEXUS-HD series product.
2. Click the appropriate link for your product under the Current Client Software Version column to download the WinLGX installer.
3. Navigate to where the WinLGX installer (WinLGX\_v7.0.x.x\_Installer.exe) is saved on your computer.
4. Right click the WinLGX installer and choose the **run as administrator** option to start the installation. Follow the prompts to complete setup.
5. As WinLGX installs, two additional windows will be displayed. **NOTE:** Refer to Figure 6.a on the right for a description of each window and installation guidelines.
6. Click **Finish** to close the WinLGX setup wizard and return to Windows.

- **Microsoft Visual C++ library window:** This window is used to install the Microsoft Visual C++ runtime components needed to run WinLGX on your computer or network. Click **Repair** if you are using WinLGX version 6 or older (i.e., WinLGX versions 6.0.1.48). If you are already running WinLGX 7 or greater, click **Cancel** on the bottom of the popup window.  
**NOTE:** Choosing **Cancel** does not stop the WinLGX installation process, which will continue as a background operation.
- **VLC media player setup wizard:** VLC media player is necessary in order to use the WinLGX software preview and confidence monitor features (for more information on these features, refer to the full manual). If you do not intend to use the WinLGX software monitor features, you may opt out of the VLC installation process by clicking **Cancel**. If you choose to install VLC media player, but do not want the player to be automatically chosen for media playback, deselect **Audio Files** and **Other** under the File Type Associations settings during installation.

Figure 6.a

## WinLGX Site Manager



### How to Schedule Your First Broadcast

Head to the Scheduling Events section in the full manual to set up your first broadcast!

Contact tech support

for additional assistance:  
(800) 243-5589  
support@leightronix.com

Use the WinLGX Controller Site Manager window to store your UltraNEXUS-HD Flex server's network IP address information. WinLGX uses each server's IP address to locate the server and send/receive system information. Manage the IP address listing of your UltraNEXUS-HD Flex as follows:

1. Click **Add** on the Controller Site Manager window to open the Add New Controller window.
2. Enter the IP address displayed on the UltraNEXUS-HD Flex server's front panel. This address can be viewed from the front panel display by pressing up/down [**▲▼**] until the IP address is shown.
3. Enter username in the User field.
4. Enter password in the Password field.
5. Click **Find**. If the correct IP address has been added, your server's site ID, location, serial number, and time zone display in the Add New window.
6. Click **OK** to enter your UltraNEXUS-HD Flex server in the site manager database.
5. If applicable, repeat steps 1-6 for each additional UltraNEXUS-HD series server in your system, otherwise click **Connect** to log in to your UltraNEXUS-HD Flex server.

**NOTE:** The username and password are case-sensitive and may only contain letters and numbers.

### FACTORY-DEFAULT USERNAME AND PASSWORD FOR THE ULTRANEXUS-HD FLEX

User field: admin

Password field: The last six digits of the UltraNEXUS-HD Flex server's serial number. **NOTE:** Enter any letters in uppercase (example 102A2A).



# 4 Web Control

Access your UltraNEXUS-HD Flex from your network with WebNEXUS™, a built-in password-protected web interface. WebNEXUS provides the ability to manage slides, create and display overlays, create looping playlists for Virtual Channel between, as, or in place of scheduled programming, transfer video files to specified destinations, and view the UltraNEXUS-HD Flex system's status, program guide, and log files.

## Accessing WebNEXUS

Open the UltraNEXUS-HD Flex web interface through one of the two following steps:

1. If you already have WinLGX open and are logged into the desired UltraNEXUS-HD Flex unit's IP address, select **Web interface** from the Tools menu or click the [ # ] toolbar icon to open the web interface in your default web browser.
2. Enter your UltraNEXUS-HD Flex unit's IP address into the address bar of a web browser.

A login prompt will appear. Enter the username and password initially set up in WinLGX to access WebNEXUS. Refer to the WinLGX Software Installation section of this quick guide for more information.

## More Information

Head to the Web Control section of the full manual for more information on WebNEXUS and its functions.

# Support

At LEIGHTRONIX, every customer of our standard product line receives technical support at no extra charge. There are no service contracts, no annual renewals, no allowances, no deductibles, and no exclusions.

In addition to a 5 year hardware warranty, benefits include access to:

- Priority toll-free telephone support
- Email support
- Online support, desktop to desktop via Webex®
- Software updates
- Firmware updates
- Assistance with updates

Looking for firmware/software or additional documentation? Go to [www.leightronix.com/support.html](http://www.leightronix.com/support.html) to download important updates and full product manuals.

**Phone: (800) 243-5589**

**Email: [support@leightronix.com](mailto:support@leightronix.com)**

LEIGHTRONIX, INC.  
1125 N Cedar Rd | Mason, MI 48854  
Phone: (800) 243-5589 or (517) 694-8000 | Fax: (517) 694-1600  
[www.leightronix.com](http://www.leightronix.com)  
05/09/18

UltraNEXUS-HD, WinLGX, and WebNEXUS are trademarks of LEIGHTRONIX, INC.

© 2018 LEIGHTRONIX, INC. All rights reserved.  
The information in this manual is subject to change without notice.